



PRISM WORKFLOW SERIES ACTION-ORIENTED DASHBOARDS

PRISM - WORKFLOW SYSTEM

Healthcare management is compliance heavy, low margin, and operationally very intensive business. Moreover, this dynamic landscape is increasingly demanding population specific deliverables with distinct KPIs which necessitates an end-to-end process workflow system. PRISM fills this gap.

PRISM is designed to be a Healthcare Compass – guiding organizations through processes while providing guidance on best practices in sync with strategic goals.

Here is simplified PRISM implementation of Action-Oriented Dashboards.

ACTION-ORIENTED DASHBOARDS

CHALLENGES

Creating a dashboard has become relatively easy. But these dashboards tend to become too static and, more importantly, do not allow an action to be taken, a flag to be raised for any issue/discrepancy observed.

STRATEGIC IMPACT

Decision making is relatively weaker because no meaningful action can be generated based on dashboards.

PRISM SOLUTION

Allow flags to be raised from well-segmented dashboards to integrate with operational processes.

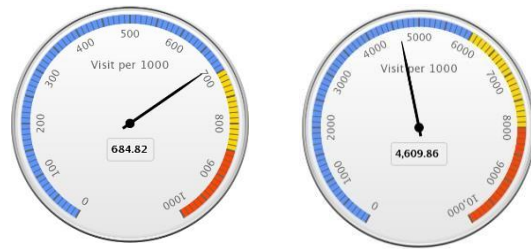
User creates a task and assigns to relevant team members for an action-item to work on.

Define item specific KPIs, for example, IP Costs or 30-Day Readmissions for Medical Expenses dashboard.

SAMPLE DASHBOARD

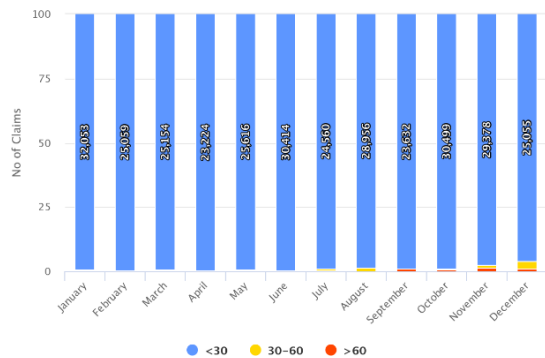
Medical Expenses

IP costs and ER cost etc. with benchmarks are always on the view – so any discrepancies are visible and alerts/tasks for a given scenario can be managed:



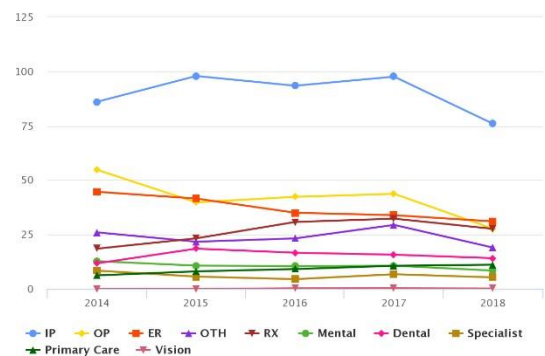
Administrative Expenses

Administrative KPIs e.g., claims process delays are depicted in one simple view:



Financial Management

PMPM Costs by various categories e.g., IP and ER, etc. are available to manage any specific change that is not clear at the first instance:





PRISM WORKFLOW SERIES ACTION-ORIENTED DASHBOARDS

PRISM DASHBOARD-BASED WORKFLOW

